

ALSO SEE SURVEYS 92-134-B, Q-1126-C, 02-019-G, 03-140-B, 04-155-B, 07-074-C, 88-045-C, 98-101-C; CORNER RECORDS; G.L.O. SURVEYS

This map was prepared for Assessment & Taxation purposes only and was NOT prepared nor is it suitable for legal, engineering or surveying purposes.

SEC 14 T5N R28E WM UMATILLA COUNTY

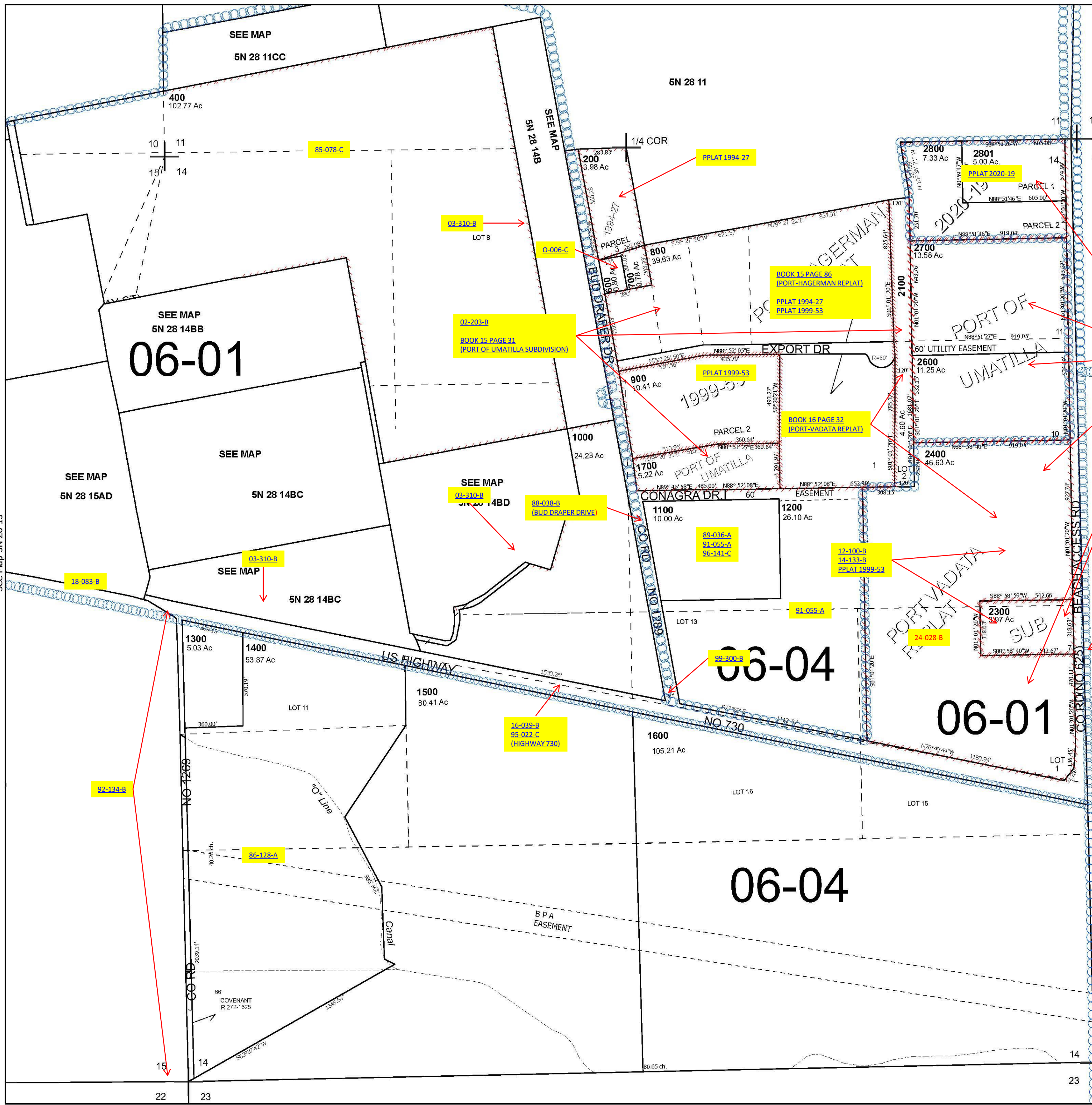
5N 28 14

Umatilla

SCALE 1" = 400'

- Cancelled Tax Lots
- 100
 - 300
 - 500
 - 1800
 - 1900
 - 2000
 - 2200
 - 2400A1
 - 2500

See Map 5N 28 11



See Map 5N 28 15

See Map 5N 28

Revised 4/11/2025

See Map 5N 28 23

5N 28 14