

ALSO SEE SURVEYS Q-1126-C, 04-155-B, 07-110-A; SURVEY NO. 33, OLD PRIVATE SURVEYS

This map was prepared for Assessment & Taxation purposes only and was NOT prepared nor is it suitable for legal, engineering or surveying purposes.

NW 1/4 NW 1/4 SEC 16 T5N R28E WM UMATILLA COUNTY

Umatilla

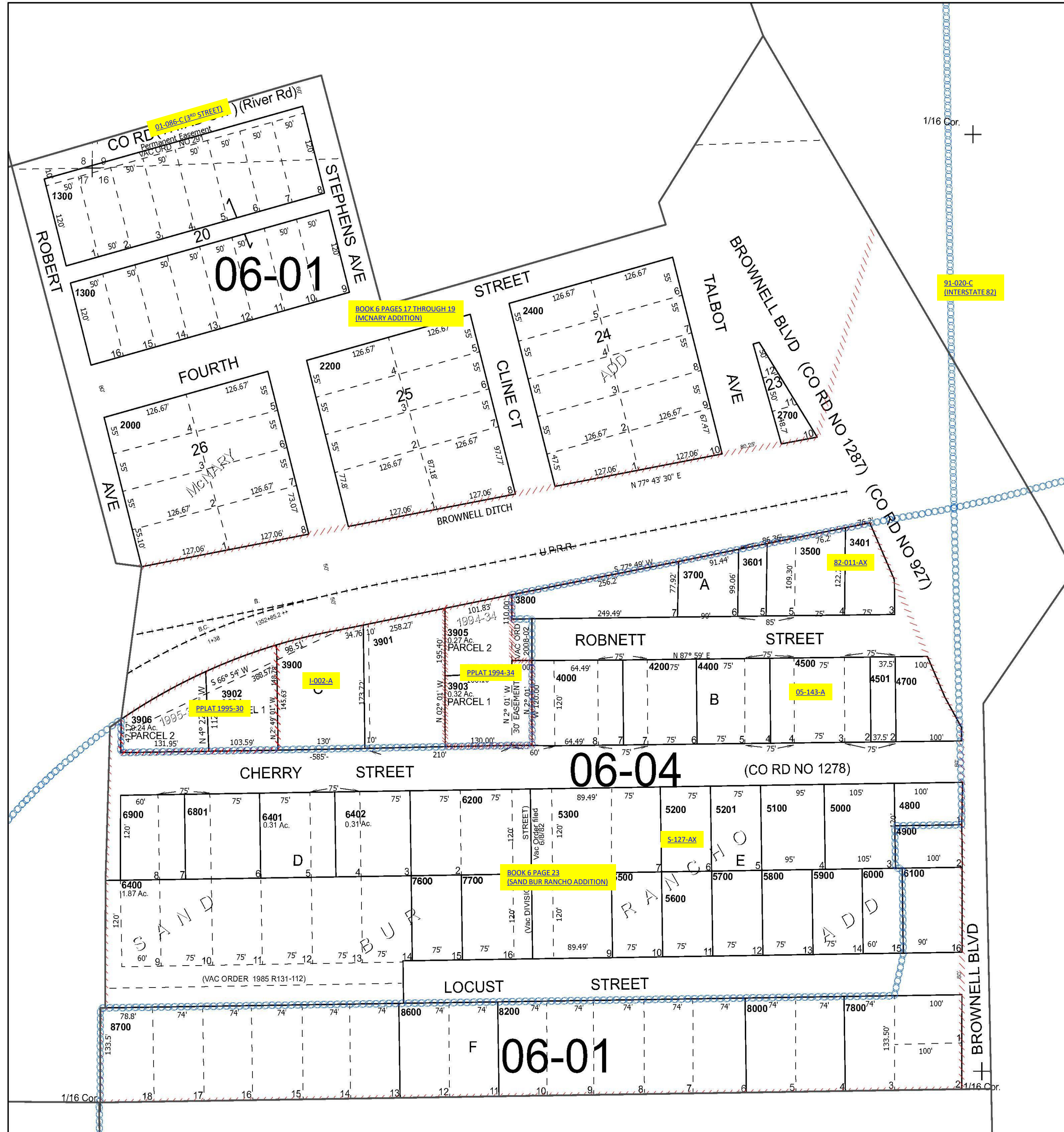
SCALE 1" = 100'

5N 28 16BB

Cancelled Tax Lots

100	1200	2600	3600	6500	7900
200	1400	2800	3904	6600	8100
300	1500	2900	4100	6700	8300
400	1600	3000	4101	6800	8400
500	1700	3100	4300	7000	8500
600	1800	3200	4401	7100	8701
700	1900	3201	4600	7200	8700
800900	2100	3300	4601	7300	
1000	2300	3400	4701	7400	
1100	2500	3402	6300	7500	

See Map 5N 28 09CC



See Map 5N 28 17AA

See Map 5N 28 16

Revised 3/27/2025

See Map 5N 28 16BC

5N 28 16BB