

ALSO SEE SURVEYS 03-218-A, Q-1126-C, 02-019-G, 03-140-B, 07-074-C, 09-040-A, 91-001-B, 94-171-G, 98-101-C, H-065-AX, I-016-C, Q-0772-B; CORNER RECORDS; G.L.O. SURVEYS

This map was prepared for Assessment & Taxation purposes only and was NOT prepared nor is it suitable for legal, engineering or surveying purposes.

Cancelled Tax Lots

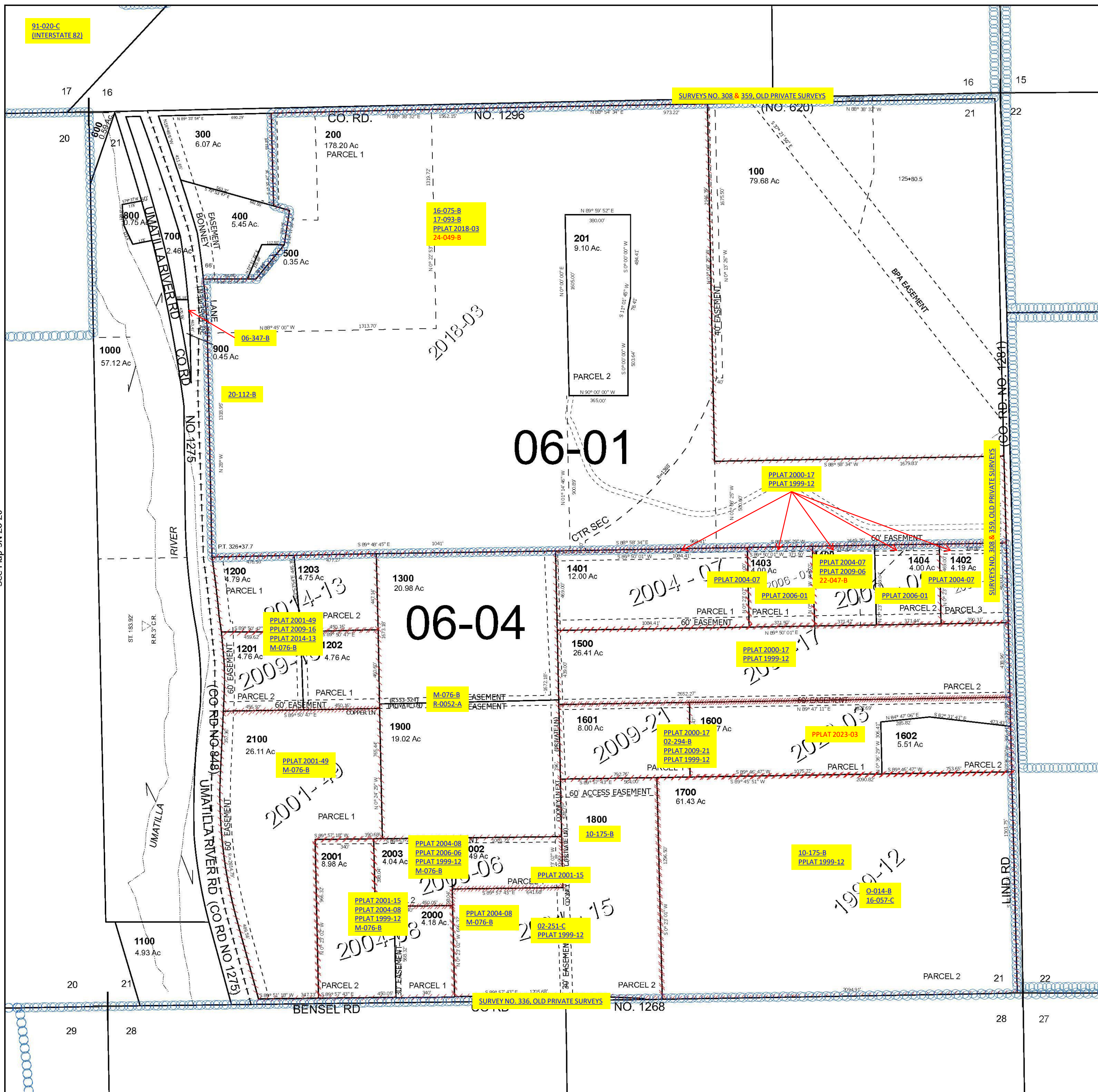
SEC 21 T5N R28E WM UMATILLA COUNTY

5N 28 21

Umatilla

SCALE 1" =400'

See Map 5N 28 16



See Map 5N 28 20

See Map 5N 28 22

Revised 3/27/2025

See Map 5N 28 28B

5N 28 21