

ALSO SEE SURVEYS 07-074-C, 94-171-G, M-052-AX; CORNER RECORDS; G.L.O. SURVEYS

This map was prepared for Assessment & Taxation purposes only and was NOT prepared nor is it suitable for legal, engineering or surveying purposes.

NE 1/4 SEC 34 T5N R28E WM

5N 28 34A

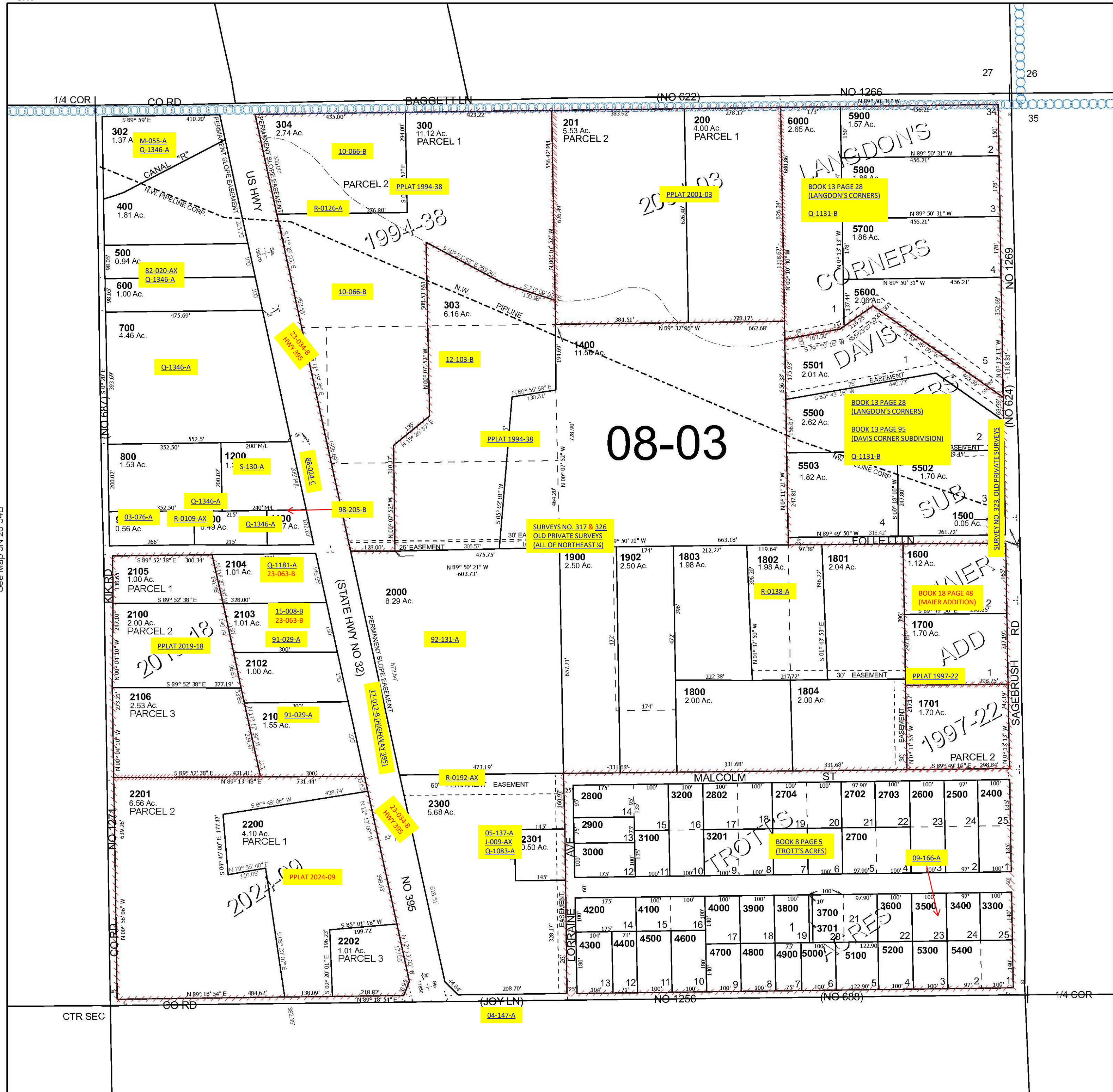
UMATILLA COUNTY

SCALE 1" = 200'

See Map 5N 28 27D

Cancelled Tax Lots

- 100
- 301
- 1300
- 1307
- 1402
- 1901
- 2105
- 2302
- 2801
- 2803



See Map 5N 28 34B

See Map 5N 28 35B

Revised 2/13/2025

See Map 5N 28 34D

5N 28 34A