

ALSO SEE SURVEYS S-031-AX, H-256-C, S-156-C, 07-074-C, 88-027-B; CORNER RECORDS; G.L.O. SURVEYS

This map was prepared for Assessment & Taxation purposes only and was NOT prepared nor is it suitable for legal, engineering or surveying purposes.

# SW 1/4 SEC 35 T5N R28E WM UMATILLA COUNTY

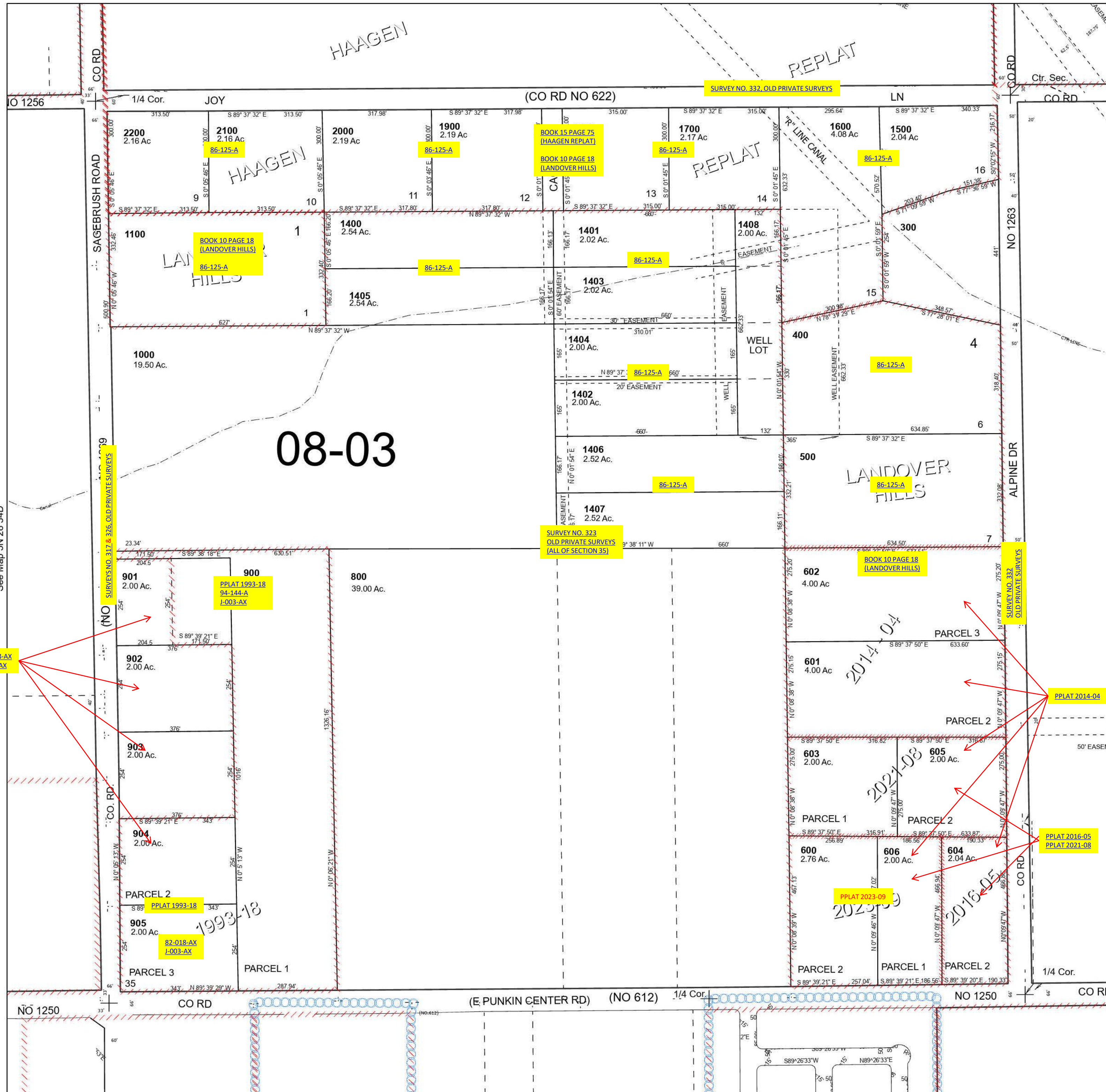
## 5N 28 35C

SCALE 1" = 200'

See Map 5N 28 35B

Cancelled Tax Lots

- 100
- 200
- 700
- 900
- 1200
- 1300
- 1409
- 1410
- 1411



Revised 7/14/2023

See Map 4N 28 02B

## 5N 28 35C