

ALSO SEE SURVEYS 03-023-C, 05-112-C, 12-029-C; CORNER RECORDS; G.L.O. SURVEYS

This map was prepared for Assessment & Taxation purposes only and was NOT prepared nor is it suitable for legal, engineering or surveying purposes.

T5N R34E WM UMATILLA COUNTY

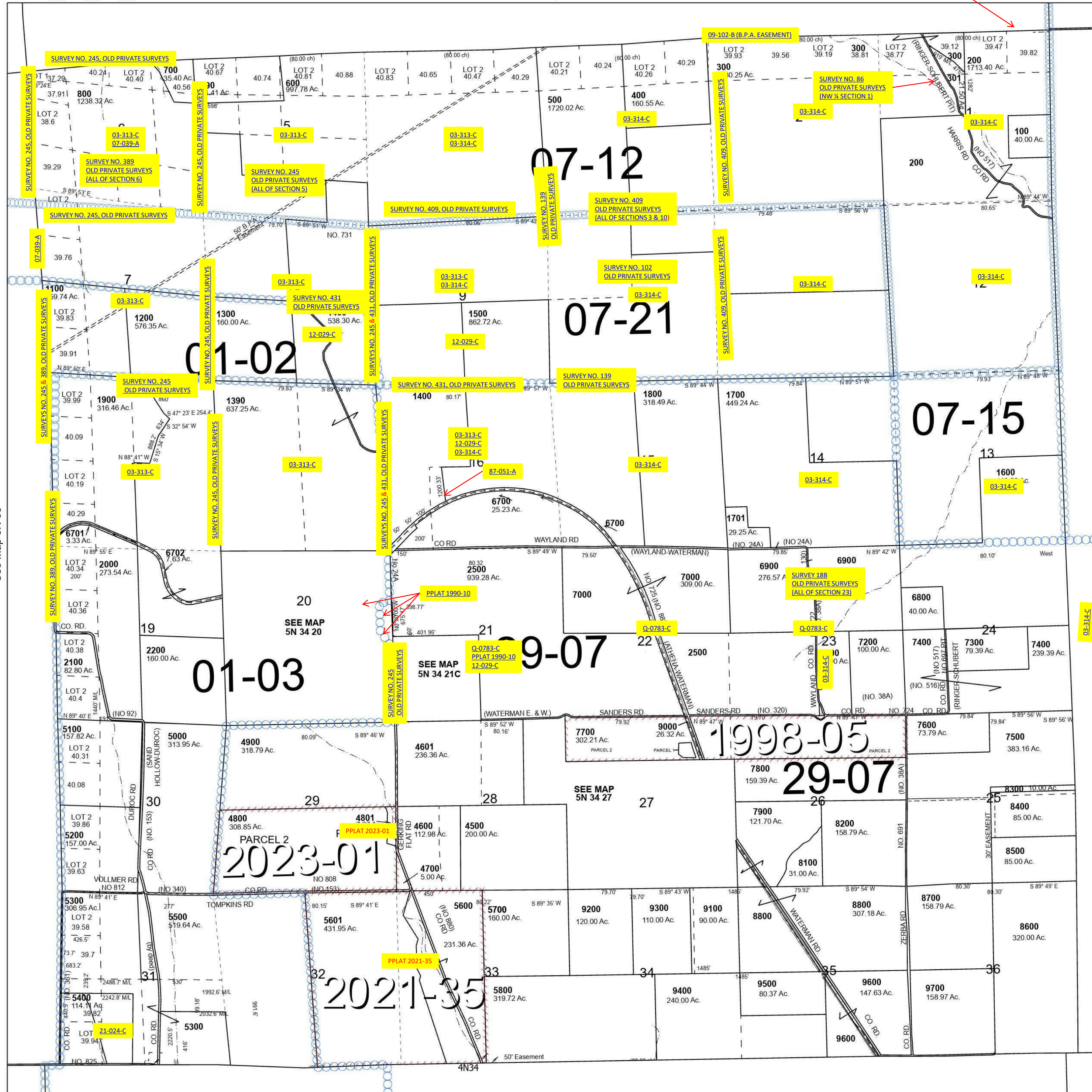
5N 34

SCALE 1" = 2,000'

See Map 6N 34

Cancelled Tax Lots

| | | | |
|-----------|------|------|-----------|
| 900 | 2800 | 3900 | 6100 |
| 1000 | 2900 | 4000 | 6200 |
| 1380 | 3200 | 4100 | 6201 |
| 1401 | 3290 | 4201 | 6300 |
| 1501 | 3300 | 4203 | 6400 |
| 2300-2302 | 3400 | 4300 | 6500 |
| 2400 | 3500 | 4301 | 6501 |
| 2401 | 3600 | 4400 | 6600 |
| 2600 | 3700 | 5901 | 6703-6706 |
| 2700 | 3800 | 6000 | |



See Map 5N 33

See Map 5N 35

Revised 8/11/2023

See Map 4N 34

5N 34