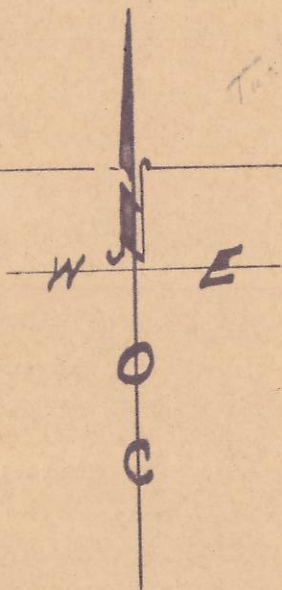
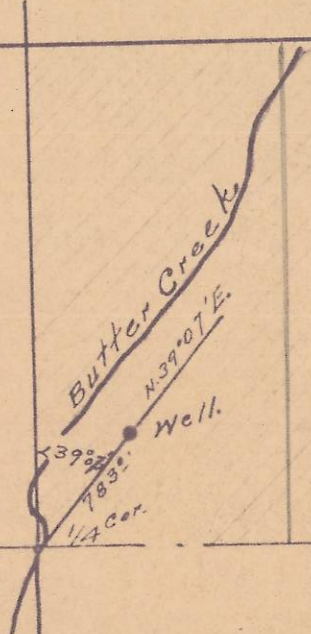


28

27



Tadpole



Morrison County
Umatilla

Map showing Location
of well in N.W. 1/4 of sec. 27
T. 2 N., R. 27 E. W.M.

Umatilla County, Oregon.

Surveyed, stated & platted,
Apr. 2nd - 1952 - By W.E. O. Criger

Scale: 1 inch = ~~1000~~¹⁰⁰⁰ Feet.



RECEIVED BY

Umatilla County Surveyor

Date: 2/8/2013

Rec'd By: S. Res

No.: 13-055-Ax