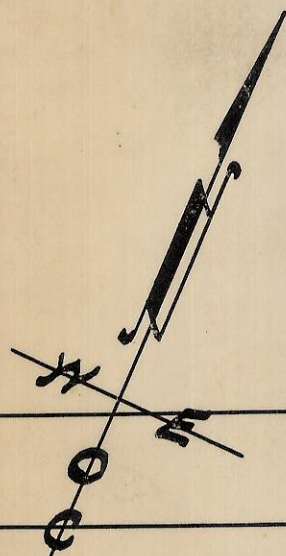
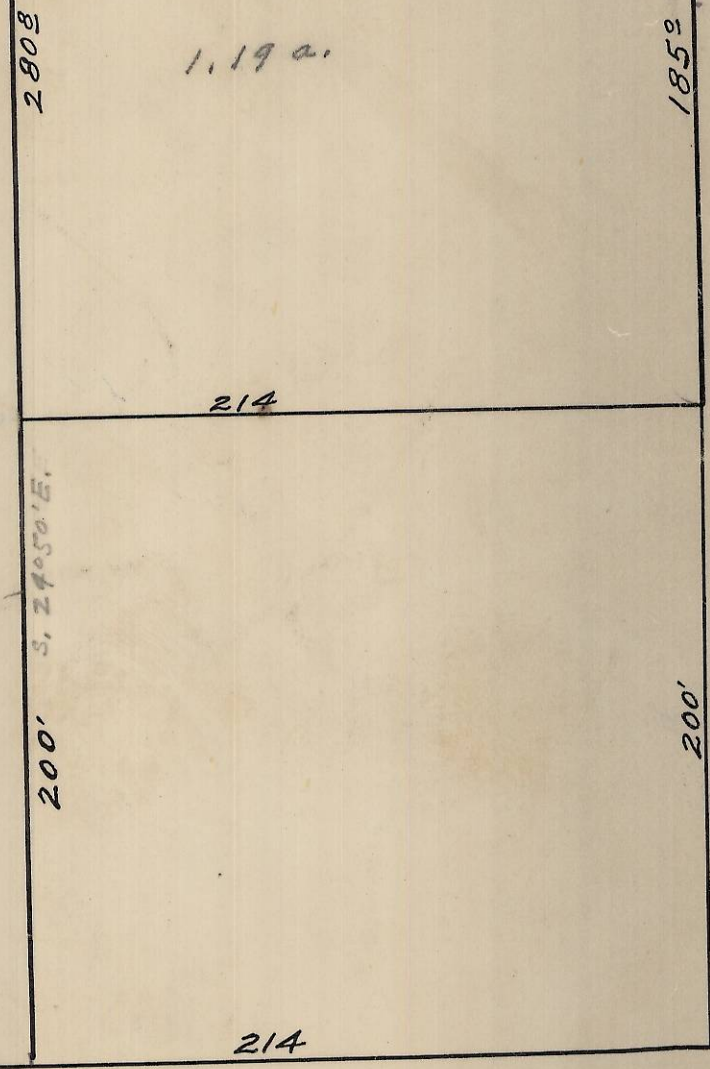




Harris Pine Mills.

233° 66°

S.W. Court Place.



Plat showing descriptive tracts in the N.E/4 of S.E/4 of Sec. 9. T. 2 N., R. 32 E. Y.M. Surveyed, staked, & platted Apr. 1949. By W. E. O. Criger - Scale: 1 inch = 60 Feet.

RECEIVED BY  
Umatilla County Surveyor  
Date: 2/8/53  
Rec'd By: S. Res  
No.: 13-061-AY

Oscar Schultz.

30' Res. Bdy  
R.B. Mon. No. 1.  
Res. Bdy - city limits