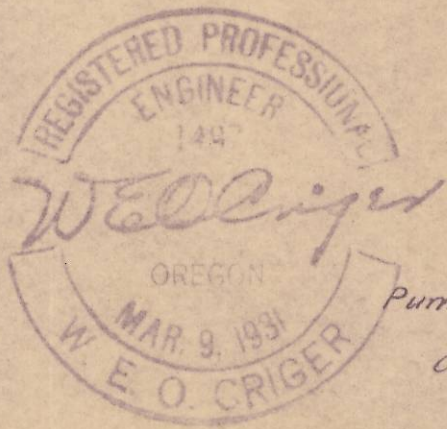
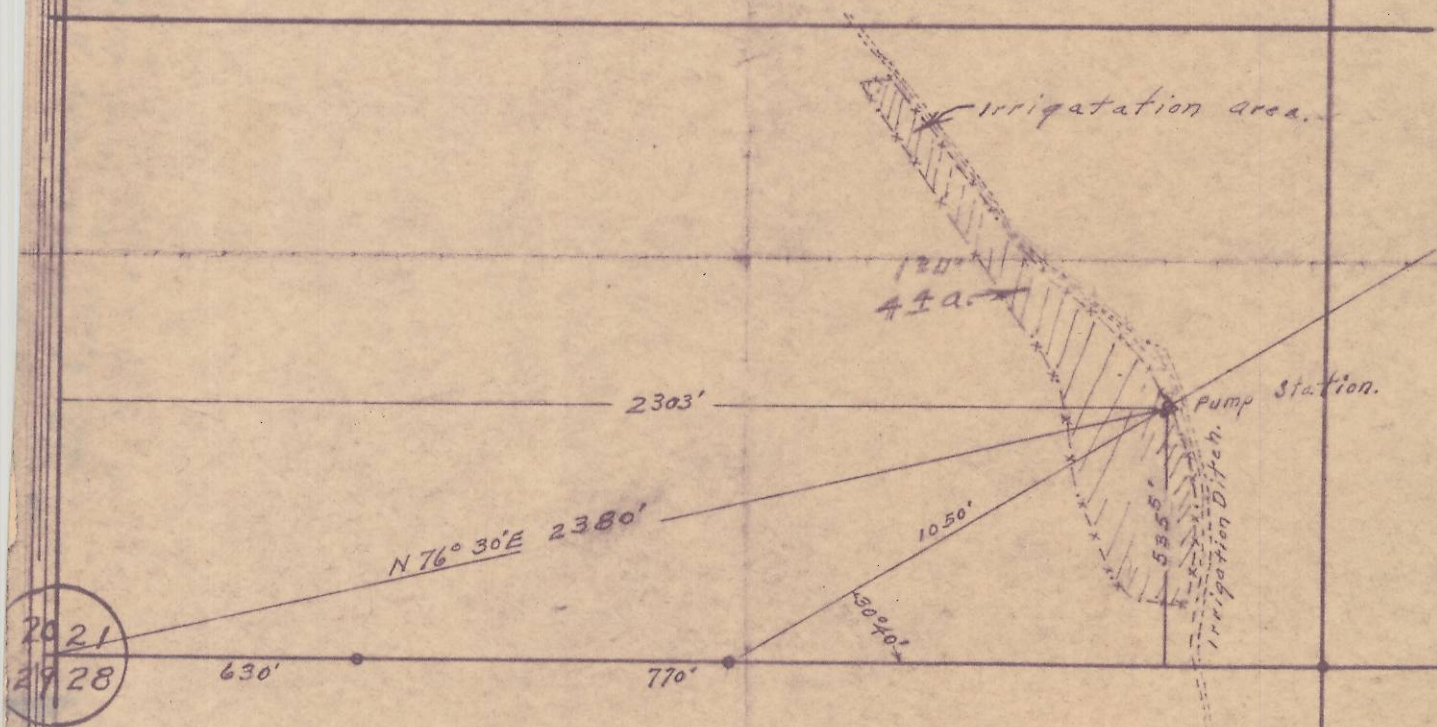
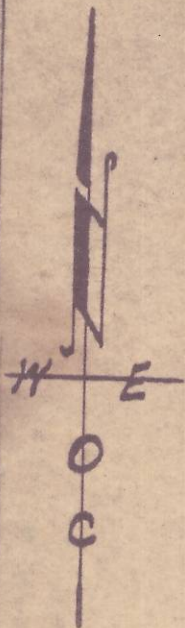


I, W.E.O. Criger, of Pendleton, Ore., do hereby certify this map was made from notes taken during an actual survey made by me on Feb. 28-1953; that the monument shown on this map consisting of a  $\frac{3}{4}$ " iron pipe 30" long - Bearing N. 76° 30' E - 2380' From S.W. Cor. of Sec. 21.

*W E Criger*



RECEIVED BY

Umatilla County Surveyor

Date: 2/8/2013

Rec'd By: S. Oles

No.: 13-062-A4

Map showing Pump Station Location on Irrigation Ditch in  $\frac{1}{2}$  of S.W. 1/4 Sec. 21 T. 2 N., R. 32 E. W. M. Owned by Frank M. Kopp, Ph 3954-Pendleton. Surveyed, staked & platted Feb. 1953. By W.E.O. Criger. Scale: 1" = 400 Ft. Area Const. = 367 a. @  $\square$