

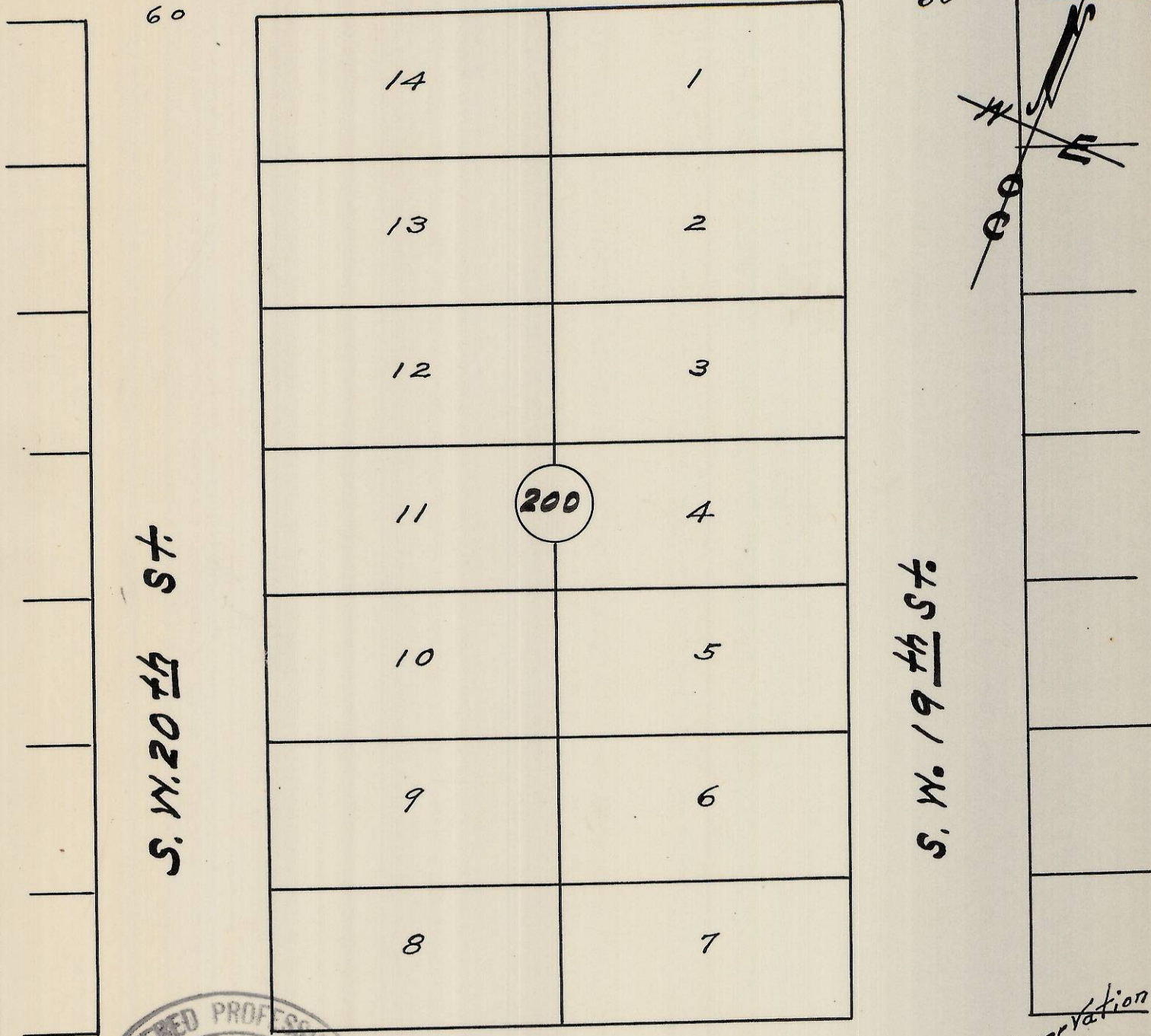
S.W. Goodwin Ave.

60

60

60

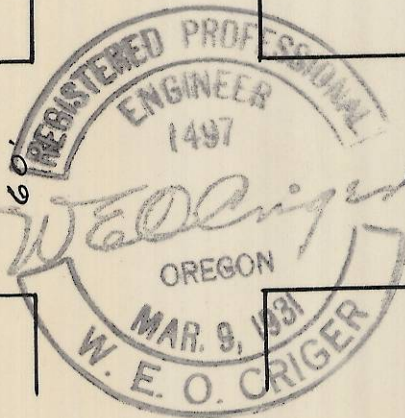
60



S.W. 20th St.

S.W. 19th St.

S.W. Hailey Ave.



plat showing Block 200 of Reservation
 Addition to the town, now City of
 Pendleton, Umatilla County, Oregon.
 surveyed, staked and platted.
 BY - W. E. O. Criger.
 scale: 1 inch = 100 Feet.

Rec'd 2/21/13
 13-078-Ax
 2N 32 10 CC