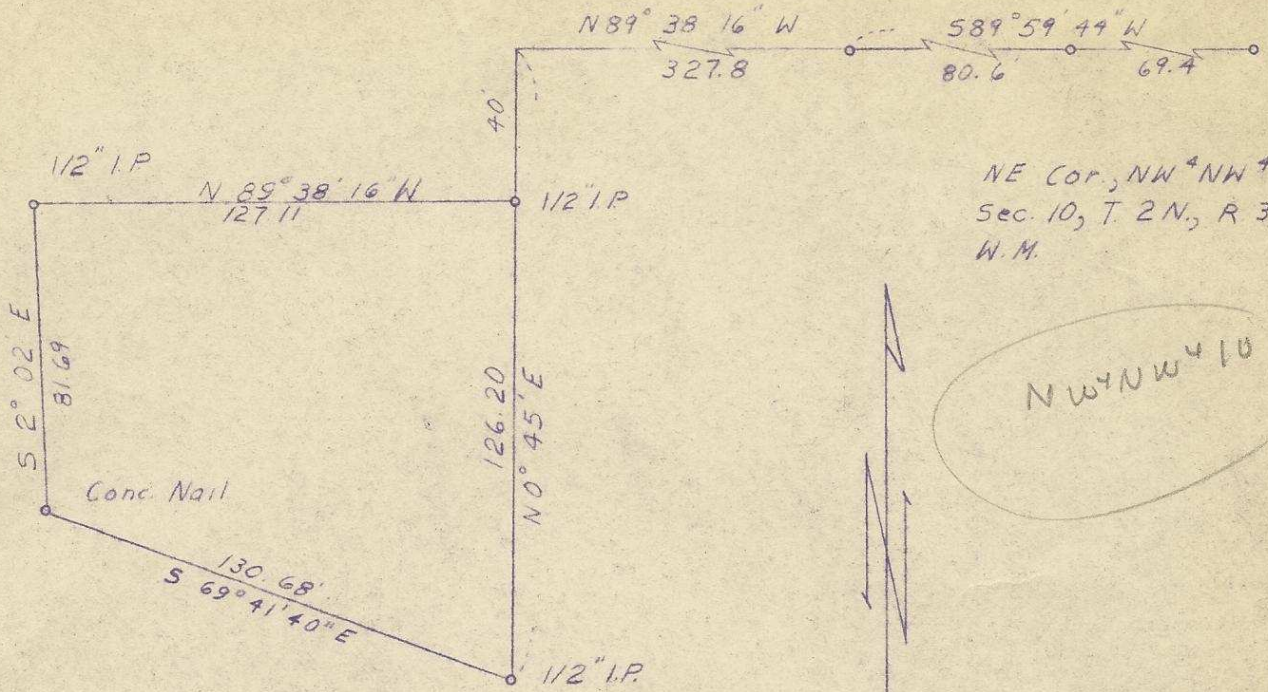


Q-307-Ax



NE Cor., NW<sup>4</sup>NW<sup>4</sup>  
Sec. 10, T. 2 N., R. 32 E.,  
W.M.

REGISTERED  
OREGON  
LAND SURVEYOR

*Wayne O. Harris*

MAY 6, 1955  
WAYNE O. HARRIS  
346

HAYES AND HARRIS

Survey for

GELTA PEEBLER

Parcel in NW<sup>1</sup>/<sub>4</sub>NW<sup>1</sup>/<sub>4</sub> Sec. 10  
T. 2 N., R. 32 E., W.M.

*Q-307-Ax*

Scale	Date	Drn. By	Drng. No.
1"-50'	9/29/59	WOH	59-98