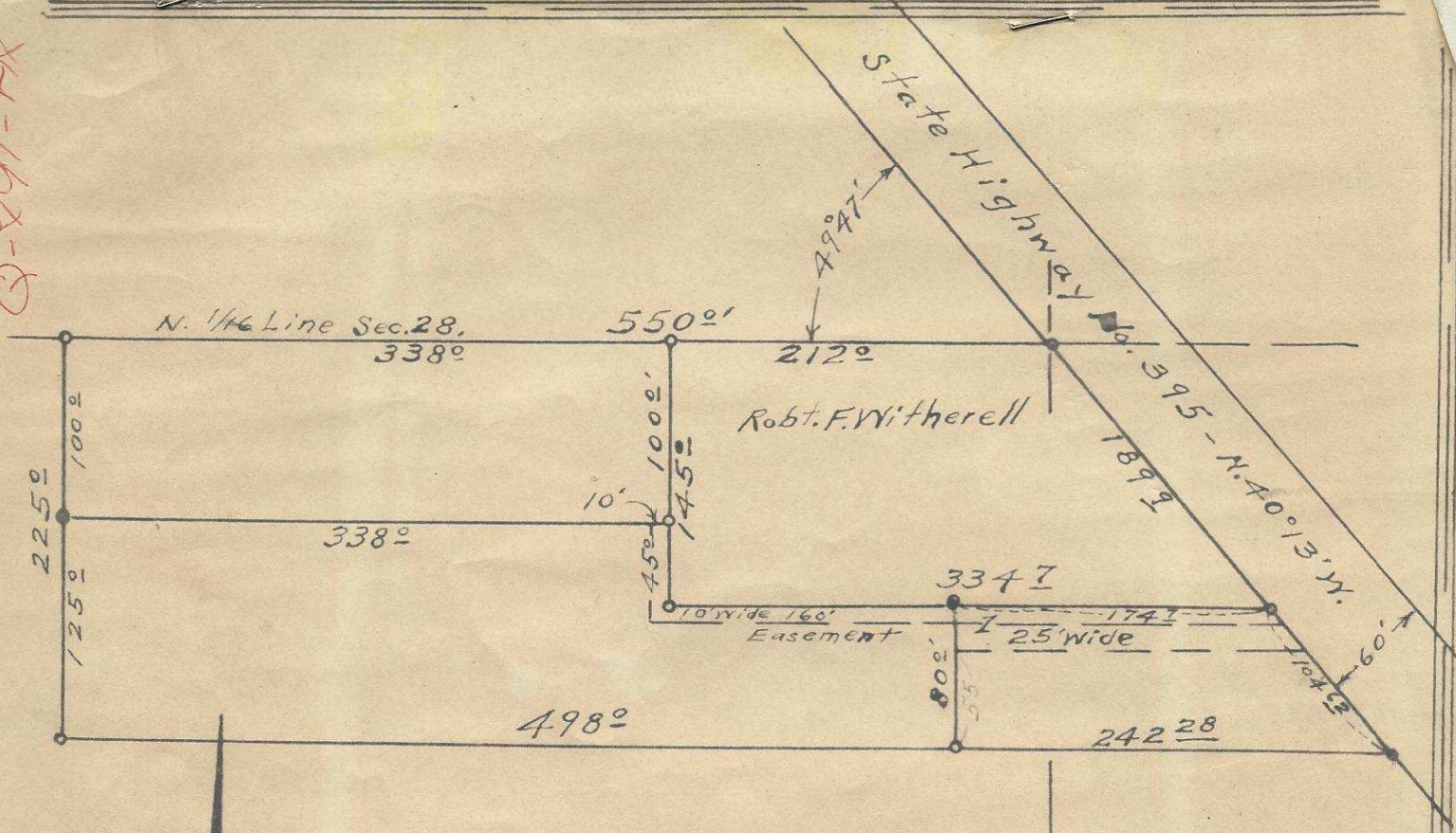


Q-X91-FA



Plat showing  
 Tracts located in the  
 S.E/4 of N.E/4 Sec. 28, T. 2 N., R. 32 E. W. M.  
 Umatilla County, Oregon.  
 Surveyed, staked & platted, Sept. 1951.  
 By W. E. O. Criger - Scale: 1 in = 100 Ft.



293

JH Bedford Street

W. E. O. CRIGER  
CONSULTING ENGINEER

Memorandum of Field notes of survey  
of Jack Bedford's tract Sec. 28 - T. N., R. 32 E. W. M.  
From a point where the north  $\frac{1}{16}$  line of  
Sec. 28 T. 2 N., R. 32 E. W. M. intersects the westerly  
Right of way line of State highway No. 395, I  
ran S.  $40^{\circ}13'E$ . 1899 feet on the said westerly  
line of Highway No. 395 and set a point,  
to indicate the N. E. Corner of the tract;  
I then continued S.  $40^{\circ}13'E$ . on said R/W line  
1046.2 ft., and set a point for the S. E. Corner;  
I then ran due west 2422.8 ft. and set  
the S. W. Corner of the tract; then ran due North  
800 ft., and set a point to indicate the  
N. W. corner; then I ran due East 1747 ft.,  
to the point of beginning.

W E O Criger

Oct-2-1951. —