

# OREGON CORNER RESTORATION FORM

**CORNER DESIGNATION:** T2N, R27E, Z-13

SOUTHEAST CORNER OF SECTION 33, TOWNSHIP 2 NORTH, RANGE 27 EAST, W.M.,  
MORROW / UMATILLA COUNTY, OREGON.

**PREVIOUS RENEWALS / SURVEYS, ETC.:**

T2N R27E WAS ORIGINALLY SURVEYED BY U.S. DEPUTY SURVEYOR EBENEZER E. HAFT UNDER CONTRACT NO. 93 DATED SEPTEMBER 11, 1860. THE NOTES READ, "SET POST FOR CORNER TO SECS 3, 4, 33 & 34 IN MOUND WITH TRENCH AND PITS AND DEPOSITED 1 PINT OF CHARCOAL AS PER INSTRUCTIONS". FOLDER 445 (MORROW COUNTY) BY WAYNE HARRIS DATED 10-18-1979 READS AS FOLLOWS, "OLD FENCE CORNER ACCEPTED AS SECTION CORNER". SURVEY 03-227-B (UMATILLA COUNTY) BY WAYNE HARRIS DATED 7-18-80 READS AS FOLLOWS, "OLD FENCE CORNER ACCEPTED AS BEST EVIDENCE OF ORIGINAL CORNER LOCATION". FOLDER 1808 (MORROW COUNTY) BY BRET ELITHORP DATED 12-18-14 FOUND AND HELD THE FENCE CORNER AS THE SOUTHWEST CORNER OF SECTION 34. FOLDER 1807 (MORROW COUNTY) BY KENNETH DELANO JR. DATED 2-30-16 COMPUTED THE FENCE CORNER LOCATION FROM AFOREMENTIONED FOLDER 1808.

**MONUMENT AND ACCESSORIES FOUND:**

FOUND RAILROAD TIE FENCE CORNER AS CALLED FOR IN PREVIOUS SURVEYS. DUG 3-FOOT DIAMETER BY 2-FOOT DEEP HOLE AROUND RAILROAD TIE IN SEARCH OF ORIGINAL EVIDENCE, NONE FOUND. CORNER CHECKS WELL WITH ESTABLISHED SOUTHWEST AND NORTHEAST CORNERS OF SECTION 33 AND REPRESENTS THE ACCEPTED LONG TERM POSSESSORY LINES BETWEEN ADJOINING LANDOWNERS. I ACCEPT THE RAILROAD TIE AS BEST AVAILABLE EVIDENCE OF SECTION CORNER LOCATION.

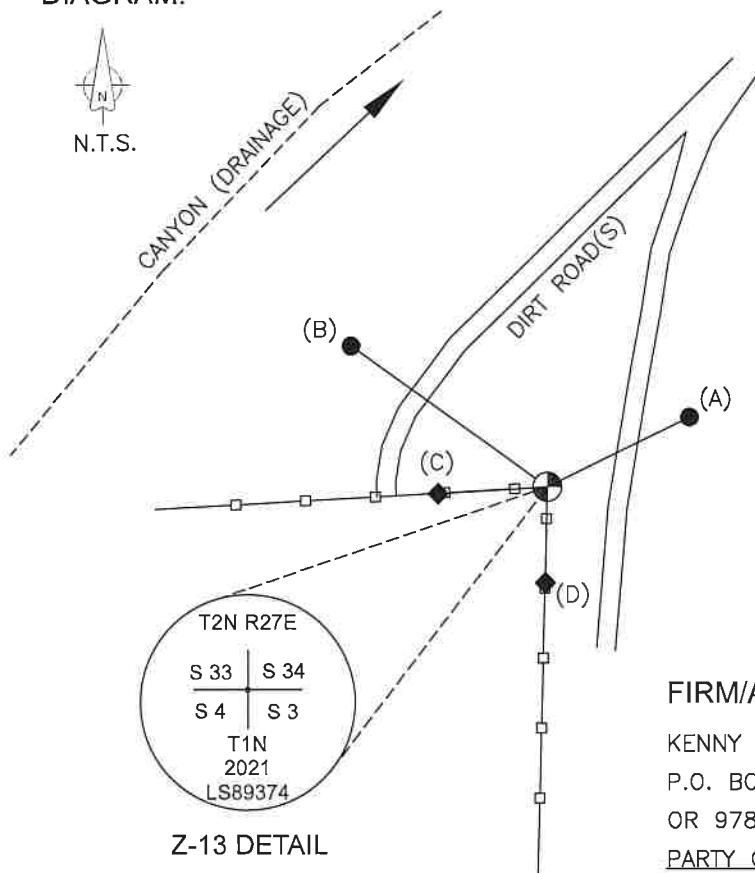
**MONUMENT AND ACCESSORIES SET:**

AT NORTHEAST CORNER OF RAILROAD TIE, SET 2-3/8 INCH BRASS CAP ON 2-3/8" (O.D.) X 30" GALVANIZED IRON PIPE, FLUSH WITH SURFACE, MARKED AS SHOWN IN DETAIL BELOW. ESTABLISHED 4 REFERENCE MONUMENTS AS FURTHER DESCRIBED AND DETAILED BELOW.

**REFERENCES:**

- (A) NEAR NORTH SIDE OF SMALL SAGE BRUSH, SET 5/8" x 30" STEEL REBAR WITH 1-1/2" ALUMINUM CAP MARKED KENNY LS89374, FLUSH WITH SURFACE. CORNER BEARS S63°48'49"W, 41.21'.
- (B) AT SOUTHEAST SIDE OF LARGE SAGE BRUSH, SET 5/8" x 30" STEEL REBAR WITH 1-1/2" ALUMINUM CAP MARKED KENNY LS89374, FLUSH WITH SURFACE. ATTACHED BEARING OBJECT SIGN TO BASE OF SAGE. CORNER BEARS S54°16'46"E, 62.81'.
- (C) SET 2" MAG SPIKE WITH ALUMINUM WASHER MARKED KENNY LS89374 IN FENCE POST. ATTACHED BEARING OBJECT SIGN TO POST. CORNER BEARS N86°23'35"E, 28.42'.
- (D) SET 2" MAG SPIKE WITH ALUMINUM WASHER MARKED KENNY LS89374 IN FENCE POST. ATTACHED BEARING OBJECT SIGN TO POST. CORNER BEARS N01°13'17"E, 25.00'.

**DIAGRAM:**



**LOCATION AND COMMENTS:**

LOCATED AT SOUTH-WEST FENCE CORNER IN CANYON. 1 MILE EAST OF CAMPBELL ROAD. BEST ACCESSED BY DRIVEWAY AND FARM ACCESS LOCATED 0.8 MILES SOUTH ON BUTTER CREEK ROAD FROM THE INT. OF HIGHWAY 207 AND BUTTER CREEK ROAD. FROM DRIVEWAY, CORNER IS ABOUT 0.8 MILES SW ALONG PRIMITIVE DIRT ROADS.

**BEARING BASE:**

REPORTED BEARINGS ARE GRID. NAD 83(11) OREGON NORTH STATE PLANE

**REGISTERED  
PROFESSIONAL  
LAND SURVEYOR**

*Matthew Patrick Kenny*

OREGON  
JAN 12, 2016  
MATTHEW PATRICK KENNY  
89374PLS

**FIRM/AGENCY:**

KENNY LAND SURVEYING  
P.O. BOX 447 HEPPNER,  
OR 97836

PARTY CHIEF: MATT KENNY

RENEWALS: 6-30-21

21-048-8