

G-19

OREGON CORNER RESTORATION FORM

Section 11 Township 2N Range 33E

County Umatilla Date August 25, 1988

9-19

CORNER DESIGNATION

Center 1/4 Corner

- Condition Report Only
- Not Found
- Renewed
- Unrecorded
- Surveyed In
- Referenced Out

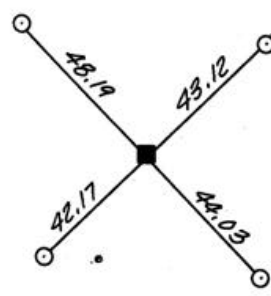
Previous Renewals/Surveys, etc. Surveys 82-64Ax, 82-86Ax, 83-176B, 86-4B, 87-69B, and others

Monument(s) & Accessories Found: (Condition and Source)

Refer to survey filed during September, 1988 for EDT Construction. ANDERSON.PERRY & ASSOCIATES, INC., was not present to witness the condition of the existing monument and did not participate in its re-ferencing prior to the removal of the monument during road construction activities. The corner accessories found, as described hereon, were placed by Whitesfield, Inc., during March, 1988.

Monument Detail

T2N R33E
WM
C 1/4
-S11
LS 1099
1988



Sketch

FD, UNMARKED
5/8" IRON REINFORCING
ROD, TYP

N.T.S.

Monument Set (Procedures and Description)

Set an iron reinforcing rod 0.6 ft. below the roadway surface, beneath an aluminum monument cover, with an aluminum cap attached.

Marked as shown in the monument detail above.

New Accessories

None established in addition to those shown in the sketch above.

Location & Comments

Located along the Center-
line of Short Mile Road
(Co. Road #908).

Compass Declination 20° E
Firm/Agency ANDERSON.
PERRY & ASSOCIATES, INC.
Address P.O. Box 1107
La Grande, OR 97850

Surveyor's Seal

RECEIVED BY

Umatilla County Surveyor

Party Chief Edwin Stryker

Date 12-88

Notes --

Rec'd By KA

Witness Steven J. Anderson

No. 88-87-C

