

OREGON CORNER RESTORATION FORM

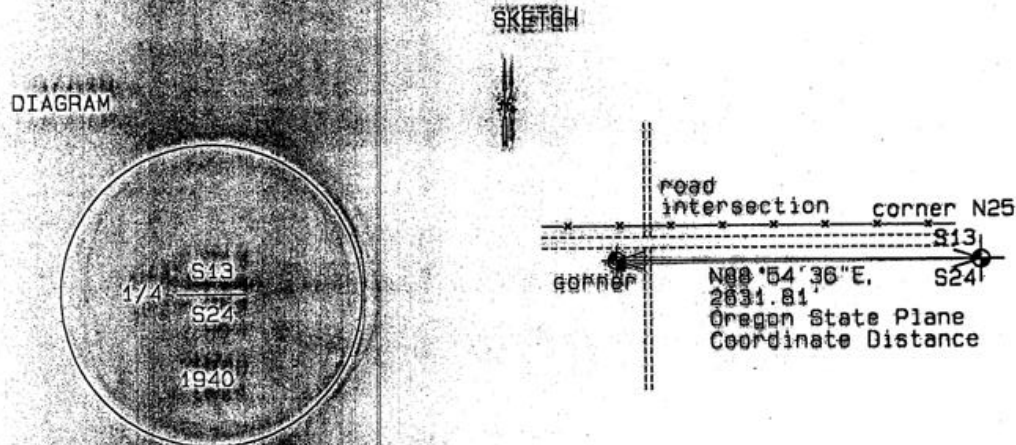
Section 24 Township 3N Range 27E
 County Umatilla Date 06-28-02
 Corner Designation: 3N27N23

Condition Report Only
 Not Found
 Remonumented
 Unrecorded
 Surveyed In
 Referenced Out

Previous Renewals / Surveys, etc.
 Survey 90-49-B records finding this monument set by Gould in 1940.

Monument and Accessories Found: (condition and source)

Found a brass capped monument stamped as shown in the diagram.



MONUMENT (S) AND ACCESSORIES SET (Procedures and Description)

None.

REFERENCES SET

None.

Made GPS tie to TRM Station
 Stanfield East Base
 Latitude 45°24'04.77662\"/>

Oregon State Plane Coord. - North Zone
 Northing 755616.97
 Easting 8487362.36
 Ortho Height 862.92
 Ellipsoidal Height 793.19

Location and Comments **Compass Declination** **Surveyors Seal**

From junction of I84 and Westland Road, go south on Jordan Road 1.4 mile. Then follow the Madison Farm Road through the center in a generally southern direction for 3.3 miles to corner 3N27N23. Then go west 0.5 mile to corner.

REGISTERED
 PROFESSIONAL
 LAND SURVEYOR

RECEIVED BY:

Date: 12-8-02
 Rec'd. By: KIS
 No: 02-282-9

Firm / Agency
 Haddock Surveying
 P. O. Box 1874
 Pennington, OR 97801
 (503) 276-2174

David L. Haddock

OREGON
 JULY 12, 1968
 DAVID L. HADDOCK
 852