

# OREGON CORNER RESTORATION FORM

SECTION 2,11 TOWNSHIP 4 NORTH RANGE 29 EAST  
 COUNTY : UMATILLA DATE MAY/20

E-19

CORNER DESIGNATION

1/4 CORNER

- CONDITION REPORT ONLY
- NOT FOUND
- RENEWED
- UNCOVERED
- SURVEYED IN
- REFERENCED

PREVIOUS RENEWALS / SURVEYS, ETC.

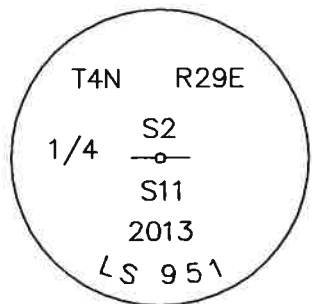
ORIGINALLY SURVEYED IN 1861 BY DAVENPORT UNDER CONTRACT #101. HE SET A POST IN A MOUND OF EARTH AND A CHARRED STAKE.  
 U.S. DEPT. OF AGRICULTURE SURVEY IN 1934, NO RECORD.  
 EDWARDS SET A 2 3/8" BC IN 2013.

MONUMENTS AND ACCESSORIES FOUND: CONDITION AND SOURCE

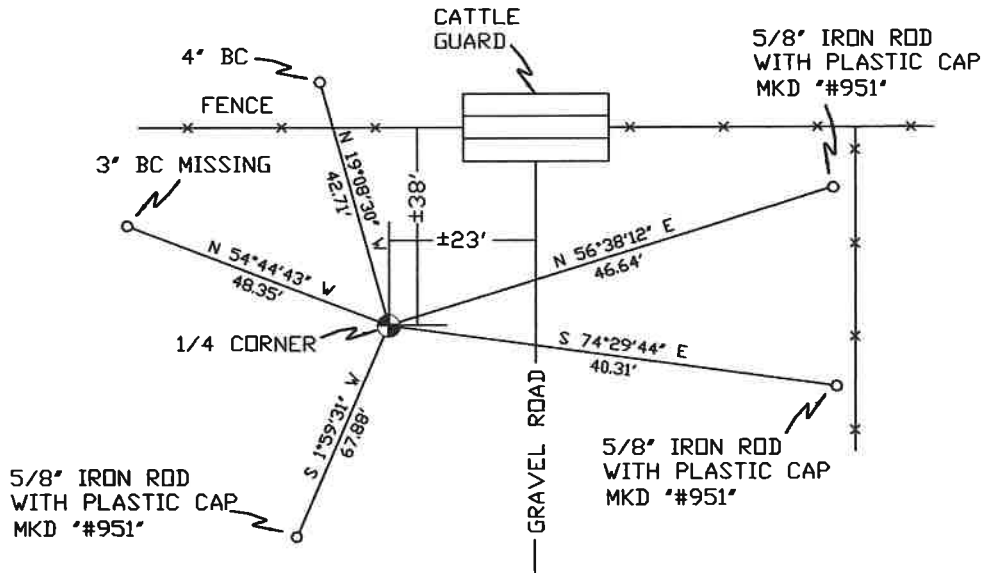
A 5/8" IRON ROD WITH A PLASTIC CAP "#951" LIES S 1°59'31" W, 67.88 FEET.  
 A 5/8" IRON ROD WITH A PLASTIC CAP "#951" LIES S 74°29'44" E, 40.31 FEET.  
 A 5/8" IRON ROD WITH A PLASTIC CAP "#951" LIES N 56°38'12" E, 46.64 FEET.  
 A 4" BRASS DISK IN CONC. STAMPED BM 1960 LIES N 19°08'30" W, 42.71 FEET.  
 U.S. DEPT. OF AGRICULTURE 3" BRASS DISK IN CONC. POST LIES N 54°44'43" W, 48.35 FEET.  
 BRASS CAP AND CONC. POST MISSING, HOLE IN GROUND IS ALL THAT REMAINS  
 A 2 3/8" BC STAMPED AS BELOW.

MONUMENT DETAIL

SKETCH



NAD 83/91  
 OREGON STATE PLANE  
 INTERNATIONAL FEET  
 798797.30  
 8545273.87



MONUMENT SET ( PROCEDURES AND DESCRIPTION )

NEW ACCESSORIES FROM WHICH

LOCATION AND COMMENTS

FROM NORTHEASTERLY CORNER OF LOOP RD., GO NORTH 0.25 MILES TO SOUTH ENTRANCE OF COLD SPRINGS WILDLIFE REFUGE. CORNER IS 23' WEST OF CENTERLINE OF ROAD.

COMPASS DEC.

FIRM/AGENCY  
 PRIMM LAND SURVEYING  
 P.O. BOX 1322  
 HERMISTON, OREGON 97838

PARTY CHIEF  
 PAUL P. PILCH

NOTES

WITNESS  
 KEITH P. PRIMM

SURVEYOR'S SEAL

REGISTERED  
 PROFESSIONAL  
 LAND SURVEYOR

*Keith P. Primm*  
 OREGON  
 JULY 12, 2005  
 KEITH P. PRIMM  
 48490

EXPIRATION DATE: 12/31/20

*JMP*

21-009-C

Ø1 DEC 20