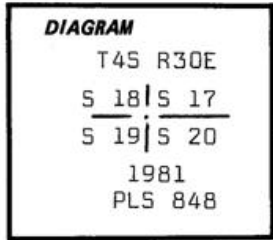


CERTIFIED RECORD OF LAND CORNER MONUMENTATION

History of original corner establishment:

Corner established in 1882 by George S. Pershin under General Land Office Contract No. 430. Surveyor General's records state:

- Set a basalt stone 18x12x10 ins. 12 ins. in ground on steep S.W. slope for cor. to Sec. 17, 18, 19 and 20 marked with three notches on S and 5 notches on E edges. Ascent about 150 ft. A pine 8 ins. di. brs. N66°E 95 lks. dist. marked T4S, R30E, S 17 BT. A pine 28 ins. di. brs. S28°E, 40 lks. dist. marked T4S R30E S 20 BT. A pine 20 ins. di. brs. S21°W, 64 lks dist. marked T4S R30E S 19 BT. A pine 28 ins. di. brs. N56°W, 30 lks. dist. marked T4S R30E S 18 BT.



N-5

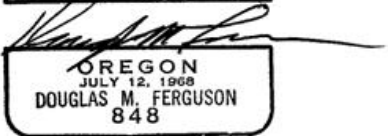
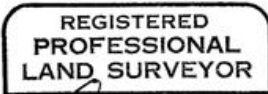
Description of corner evidence found:

Found 18"x14"x12" stone set 12 inches in the ground with 3 grooves on South face and 5 notches on East edge, set in a mound of stone on steep S.W. slope. From which Found a pine 40" dia. bears S28°E, 30.0 ft. scribing visible. Found a pine 22" dia. bears N66°E, 65.0 ft. scribing reads 4S R30E S 17. Other trees are dead, down and burned and have rolled downhill. Accepted center of stone as corner position.

Description of monument and accessories I established to perpetuate the original location of this corner:

Set 3"x30" galv. iron pipe with 3" brass cap stamped as shown on the diagram, set 18 inches in the ground and raised a mound of stone around the pipe. Set original stone North alongside the pipe. From which: A pine 12 in. dia. bears N43°W, 47.5 ft. scribed T4S R30E S 18 BT. A pine 5 in. dia. bears N41°E, 16.1 ft. scribed X BT. A fir 12 in. dia. bears S70°E, 33.0 ft. scribed T4S R30E S 20 BT. A pine 9 in. dia. bears S85°W, 22.1 ft. scribed T4S R30E S 19 BT. Set steel posts with warning and boundary signs 5 ft. North and 5 ft. West from corner. Nailed bearing tree signs and brass washers stamped PLS 848 to each tree. Painted red band around each tree.

I hereby certify that the above corner monument was reestablished as herein described on 9/81.



Witnesses: D. Mitchell Ferguson

Mike Woodward

Office of... Co., Surveyor..... County of Umatilla..... State of Oregon..... I hereby certify that the within instrument was filed in this office for record on the 23 day of January, 1982 by Betty Shatto (DEPUTY)